

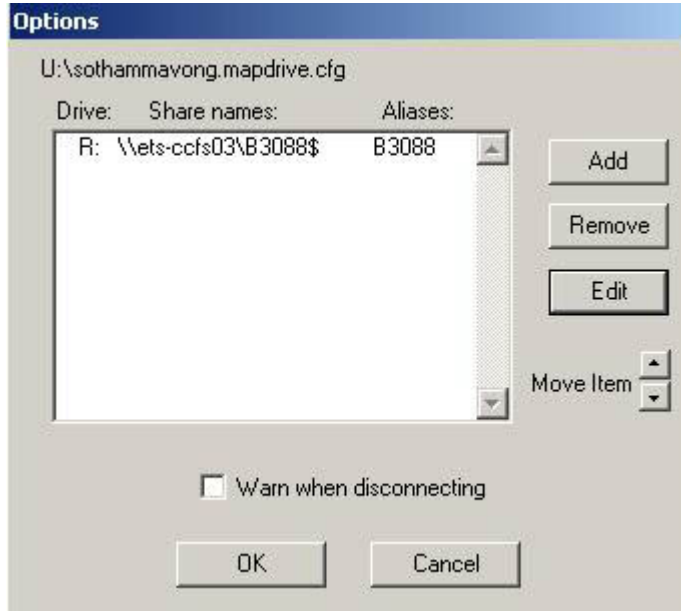
## The Mapdrive Application

The Mapdrive (NCDOT\_Mapdrive.exe) has been enhanced to allow easy access to your TIP folders on the ETS-CCFS03 server.



The new configuration offers a pull down menu that will automatically map your network R: drive to the TIP you choose.

What's R Drive? go [here](#) for an explanation



**NOTE:** The Mapdrive program DOES NOT create TIP folders on the server. The program only maps your R: to a folder that already exists on the server.

The program is configurable. Click on the symbol in the top left to go to the Options dialog or just right mouse click on the title bar.

Select the ADD button to invoke the Edit Share Description dialog.

Here, you can see that the connection drive letter is configurable as well as the \\ETS-CCFS03\share-name. Notice that in the share name your TIP must be followed by a '\$' dollar sign. The Alias field is what will be on the pull-down menu.



NOTE: The mapdrive configuration file is store under your U:\ Drive.